

Customer :

customer

Customer part :

customer part

Comment :

Comment

S1=6.09

S2=6.31

Tmax=444

Tp S2=483.0

PI=0.49

HI=130

Sample =1782.80

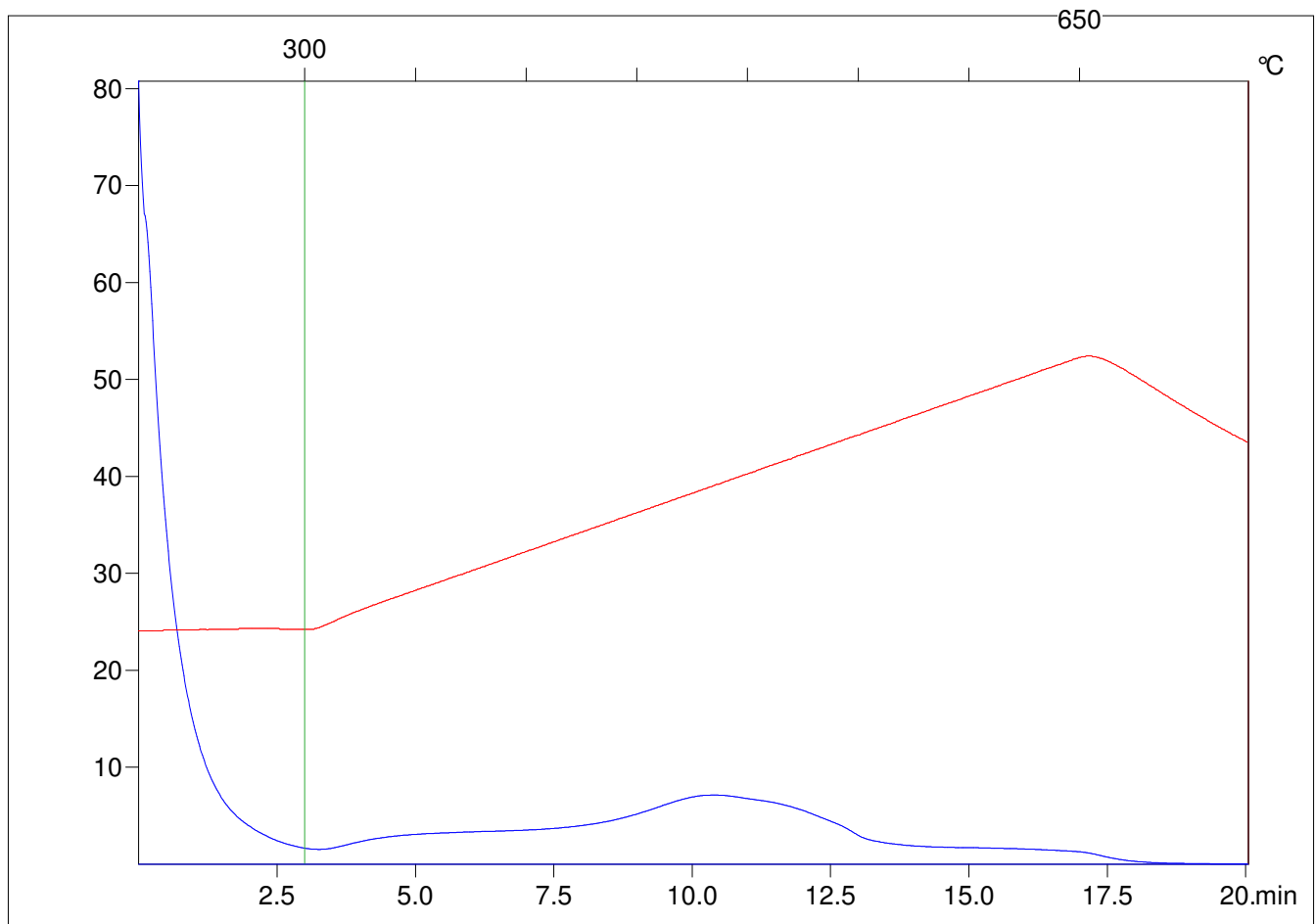
Method =Bulk Rock

Cycle=Basic

KFID(10\*9)=1444

Qty =70.0

TOC=4.86



C:\VINC\PK3\_1792\PK072.R00 : FID pyrolysis graphic

State

Pyro Status

Oxi Status